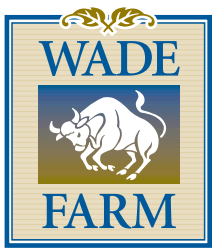




321 ACRES IN HENRY COUNTY, GEORGIA

KINGSTON

COMMERCIAL REAL ESTATE
770-551-8484



HENRY COUNTY, GA

OVERVIEW

**WADE FARM IN HENRY COUNTY
ZONED AGRICULTURAL
EXCLUSIVELY REPRESENTED BY:
MICHAEL JONES, CCIM
DARREN P. JONES
770-551-8484
FAX 770-395-1440**

Wade Farm is comprised of approximately 321 acres in Henry County, Georgia. Currently being used as a cattle farm, the property is bounded to the North by Walnut Creek, to the East by Emerald Plantation and Hwy 20, to the South by land lot 104 and Turner Church Road, and to the West by Hwy 155. Located just two miles north of downtown McDonough, the property has City sewer and City water to it.



Originally part of a large cotton plantation this working cattle farm consists of rolling piedmont land and beautiful pasture, creeks and woodlands. This property was one of the first farms terraced for soil conservation in the state of Georgia. Some of the oldest trees in Henry County are located on Wade Farm. The Union Army once had a campsite on the property during Sherman's march to the sea. And if you are lucky, you can meet the occasional gold prospector, who, after thorough research, will be searching for gold on Walnut Creek.

Located in one of the fastest growing counties in the country, Wade Farm is surrounded by executive housing as well as more moderate housing ranging from the \$150,000 to over \$600,000. The rolling topography, small town charm and county living make this ideal place to live.

The property fronts both Hwy 155 and Hwy 20. Camp Creek runs through the property and is surrounded by a buffer of mature hardwoods. The property is currently zoned Agricultural.

The property is being offered for \$14,445,000.

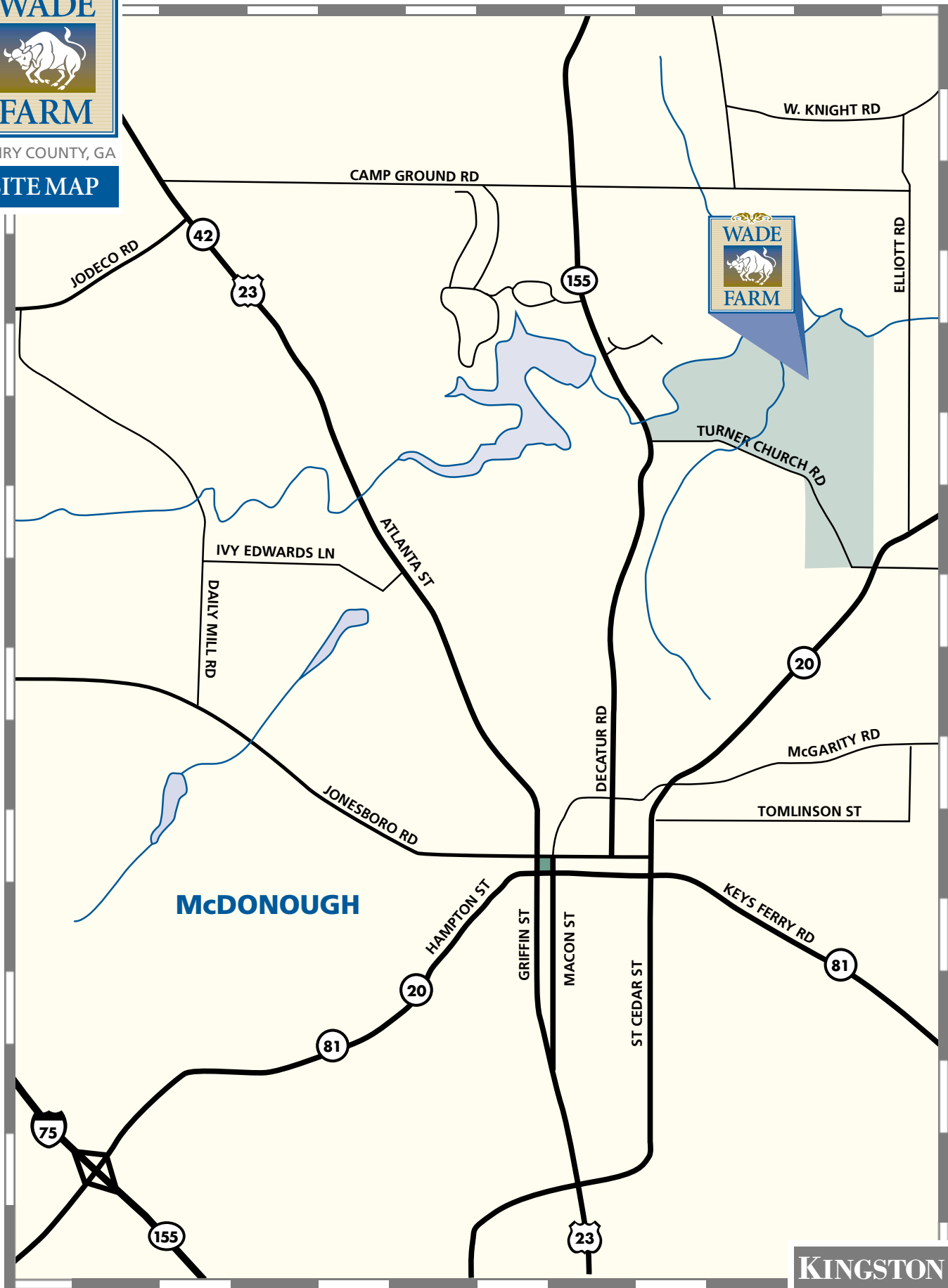


KINGSTON

COMMERCIAL REAL ESTATE

770-551-8484

WADE FARM
HENRY COUNTY, GA
SITE MAP



WADE

FARM
HENRY COUNTY, GA
AERIAL VIEW

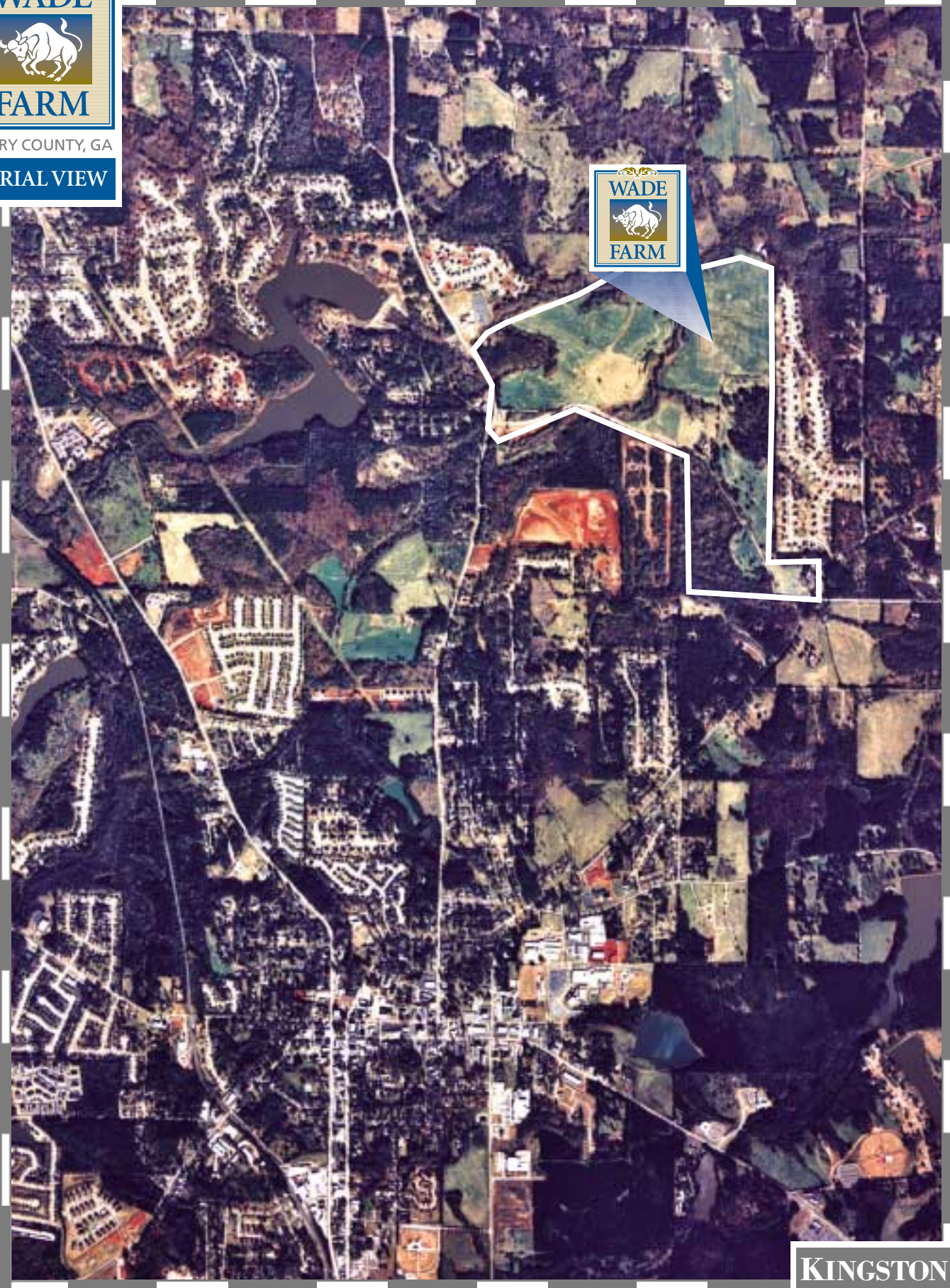


KINGSTON
COMMERCIAL REAL ESTATE
770-551-8484



HENRY COUNTY, GA

AERIAL VIEW



KINGSTON

COMMERCIAL REAL ESTATE
770-551-8484