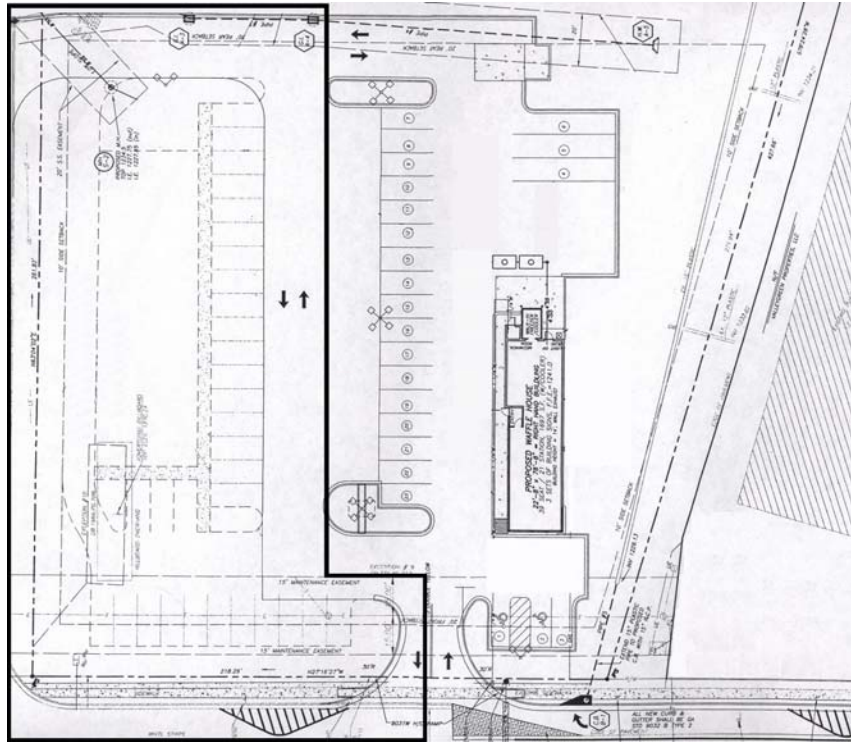
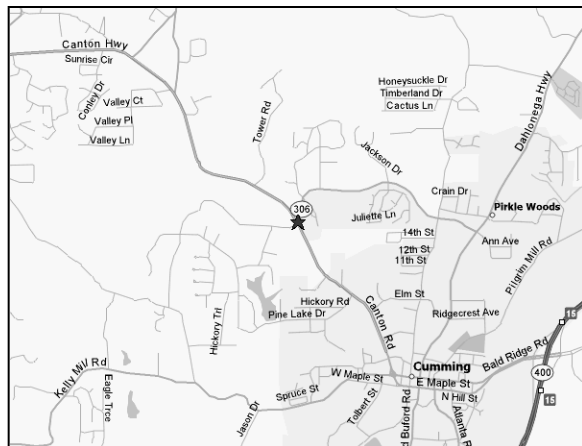


LAND FOR SALE



.80 +/- Acres

Highway 20 @ Sawnee Drive ■ Forsyth County



Features

- 130 +/- feet of frontage on Highway 20
- 26,000 cars per day traffic count
- Excellent commercial potential
- Located less than one mile north of the city of Cumming, GA
- Site work complete
- Adjacent to Waffle House restaurant
- Zoned HB (Highway Business)
- Priced at \$325,000

Darren Jones-or- Mike Jones, CCIM
Phone: 770.551.8484 ■ Fax: 678.916.4844

