

4800 Ashford Dunwoody Road

Atlanta, GA 30338

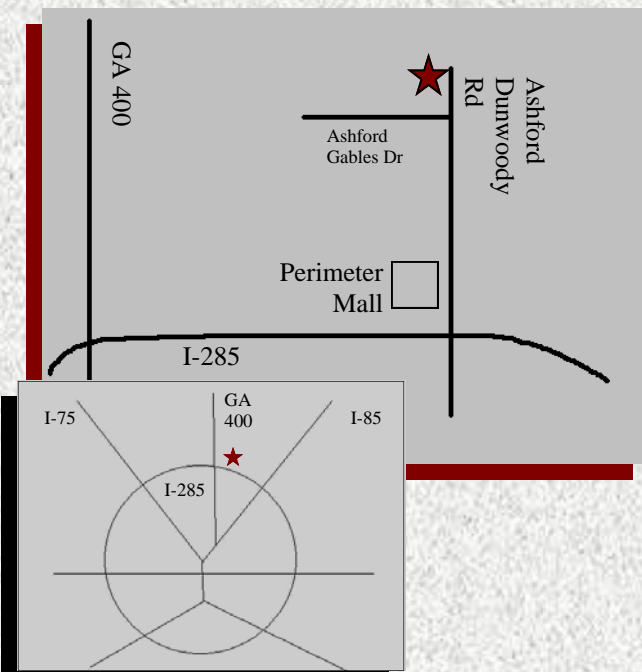
For Lease



Class A, Two-Story Office Building

Largest Contig. Space..11,986	Escalation.....DOE+
Minimum Space.....2,500	Parking Ratio.....4.0/1000
Total Square Feet.....44,622	County.....DeKalb
No. of Floors2	Year Built.....1995
Rental Rate.....	\$15.50 net
Improvement Allowance.....	Inquire

- Located in Atlanta's Central Perimeter Submarket
- Signage Available
- Class A finishes
- Class A amenities nearby
- Competitive Rates and Terms



KINGSTON

COMMERCIAL REAL ESTATE

Contact:

Michael Jones, CCIM

404-975-0042

mjones@kingstoncommercial.com

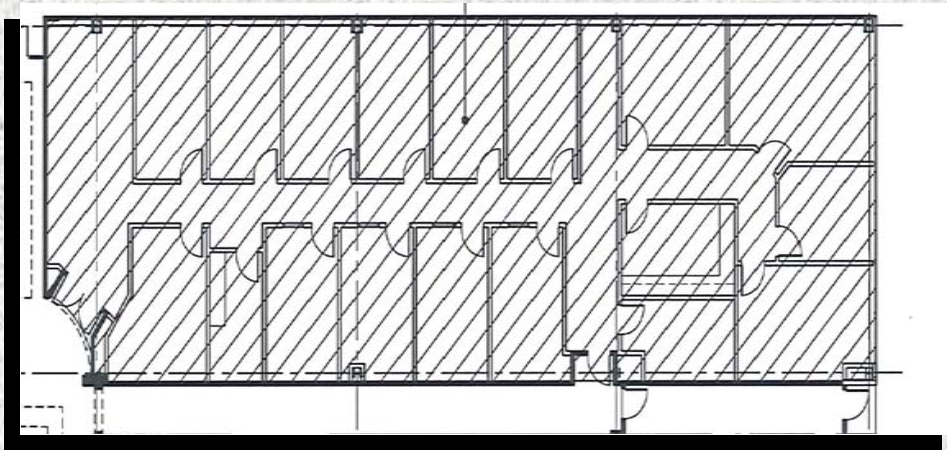
Darren Jones

404-975-0041

djones@kingstoncommercial.com

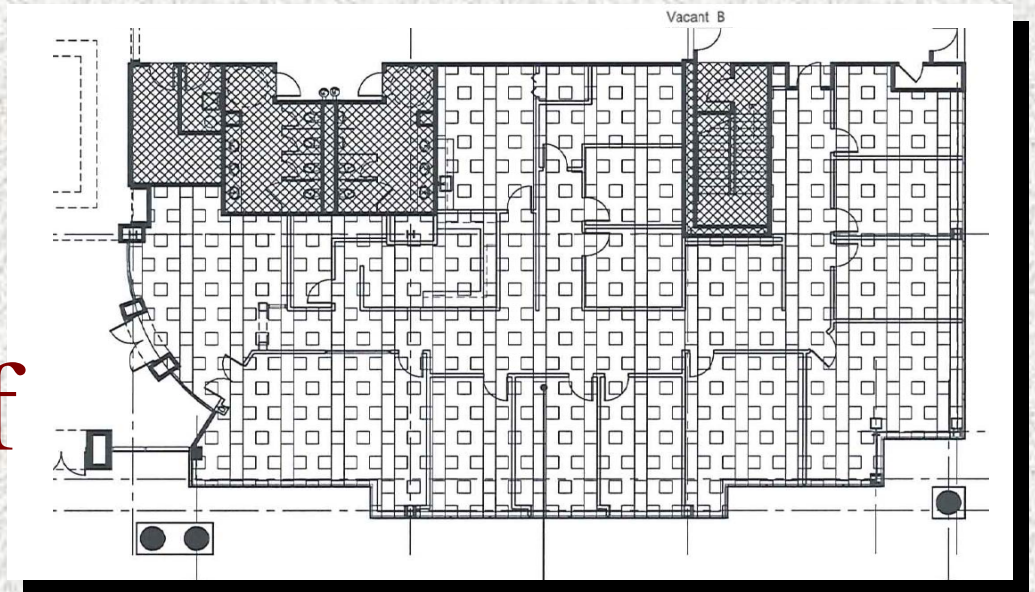
4800 Ashford Dunwoody Road

Atlanta, GA 30338



Suite
125
4,572 sf

Suite
150
5,195 sf



KINGSTON
COMMERCIAL REAL ESTATE

Contact:

Michael Jones, CCIM

404-975-0042

mjones@kingstoncommercial.com

(770) 551-8484

Fax: (678) 916-4844

Darren Jones

404-975-0041

djones@kingstoncommercial.com